

FOR LEASE

# 380 Chadbourne Road

Fairfield, California

OFFICE



## SPACE CHARACTERISTICS

- > **SIZE:** ±1,746 square feet
- > Close to Public Transportation
- > ±4/1,000 SF Parking
- > High Speed Internet Available
- > Responsive Landlord
- > Access to Highway 12, I-80, and I-680
- > Close to Public Transportation
- > Prominent Park Entry
- > Zoned IBP (Industrial Business Park)

Located in the highly improved and well maintained **BUSCH CAMPUS PARK!**

**LEASE RATE:** Call Broker

## CONTACT US

### Eric Dakin

Managing Broker  
+1 707 392 5122

[eric@dakinanddakinson.com](mailto:eric@dakinanddakinson.com)

CalBRE License No. 01816124

### Deva Dakin

Senior Associate  
+1 707 392 5115

[deva@dakinanddakinson.com](mailto:deva@dakinanddakinson.com)

CalBRE License No. 02003938

619 Buck Avenue, Suite B

Vacaville, CA 95688

+1 707 200 2097

[www.dakinanddakinson.com](http://www.dakinanddakinson.com)

Broker CalBRE License No. 01816124



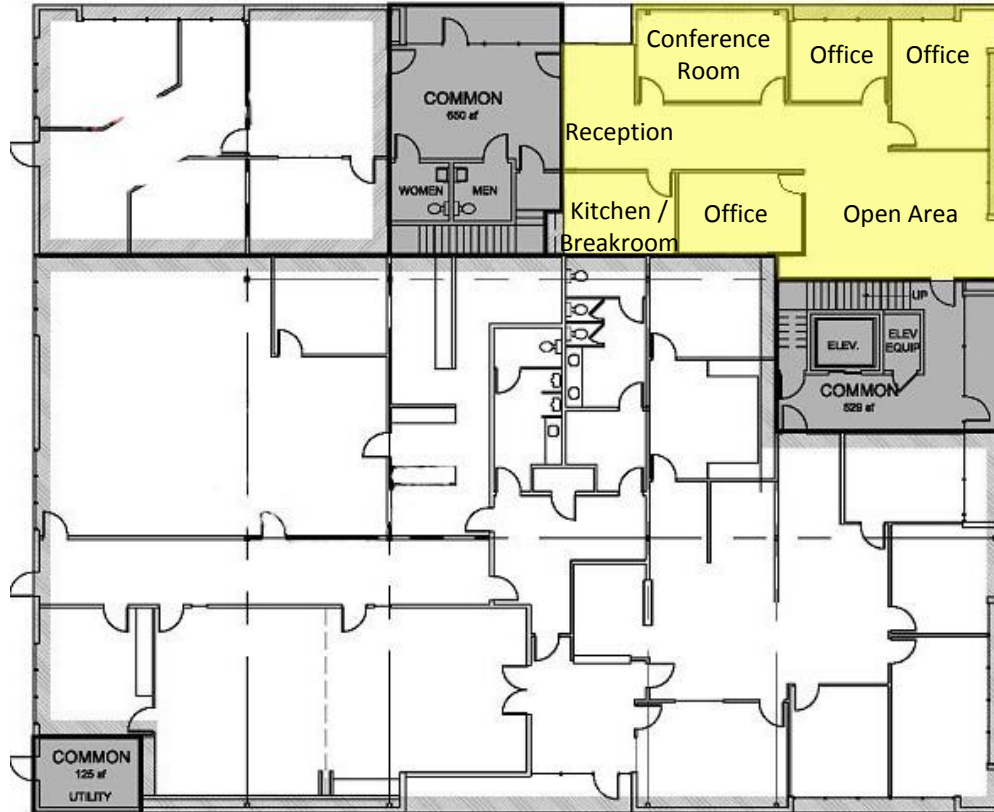
**DAKIN & DAKIN**  
COMMERCIAL REAL ESTATE SERVICES

FOR LEASE

# 380 Chadbourne Road

Fairfield, California

OFFICE



## CONTACT US

**Eric Dakin**

Managing Broker

+1 707 392 5122

[eric@dakinanddakin.com](mailto:eric@dakinanddakin.com)

CalBRE License No. 01816124

**Deva Dakin**

Senior Associate

+1 707 392 5115

[deva@dakinanddakin.com](mailto:deva@dakinanddakin.com)

CalBRE License No. 02003938

619 Buck Avenue, Suite B

Vacaville, CA 95688

+1 707 200 2097

[www.dakinanddakin.com](http://www.dakinanddakin.com)

Broker CalBRE License No. 01816124



**DAKIN & DAKIN**  
COMMERCIAL REAL ESTATE SERVICES