

1745 Enterprise Drive

Fairfield, CA

OFFICE FOR LEASE



PROPERTY DETAILS

- Close to public transportation, restaurants, retail, grocery, and other amenities
- Concrete tilt-up construction
- Newly resurfaced roof in 2020
- Newly installed motorized gates
- Elevator served
- High speed internet / data available
- 250+ parking stalls
- Centrally located in Solano County w/ easy access to Highway 12, I-80, and I-680. Close to public transportation, shopping, County Administration, City Hall, and courthouse.

ABOUT PROPERTY



LEASE RATE

Call Broker



YEAR BUILT

1963 | 1994



BUILDING SF

±92,286



PARCEL SIZE

±4.68 Acres



ZONING

Service Commercial (CS)

Information contained herein has been obtained from the owners or from other sources deemed reliable. We have no reason to doubt its accuracy but regret we cannot guarantee it. All information subject to change or withdrawal without notice.

For more information:

Eric Dakin

Managing Broker

707 392 5122

eric@dakinanddakinson.com

CA License No. 01816124

619 Buck Avenue, Suite B

Vacaville, CA 95688

707 200 2097

www.dakinanddakinson.com

Broker License No. 01816124

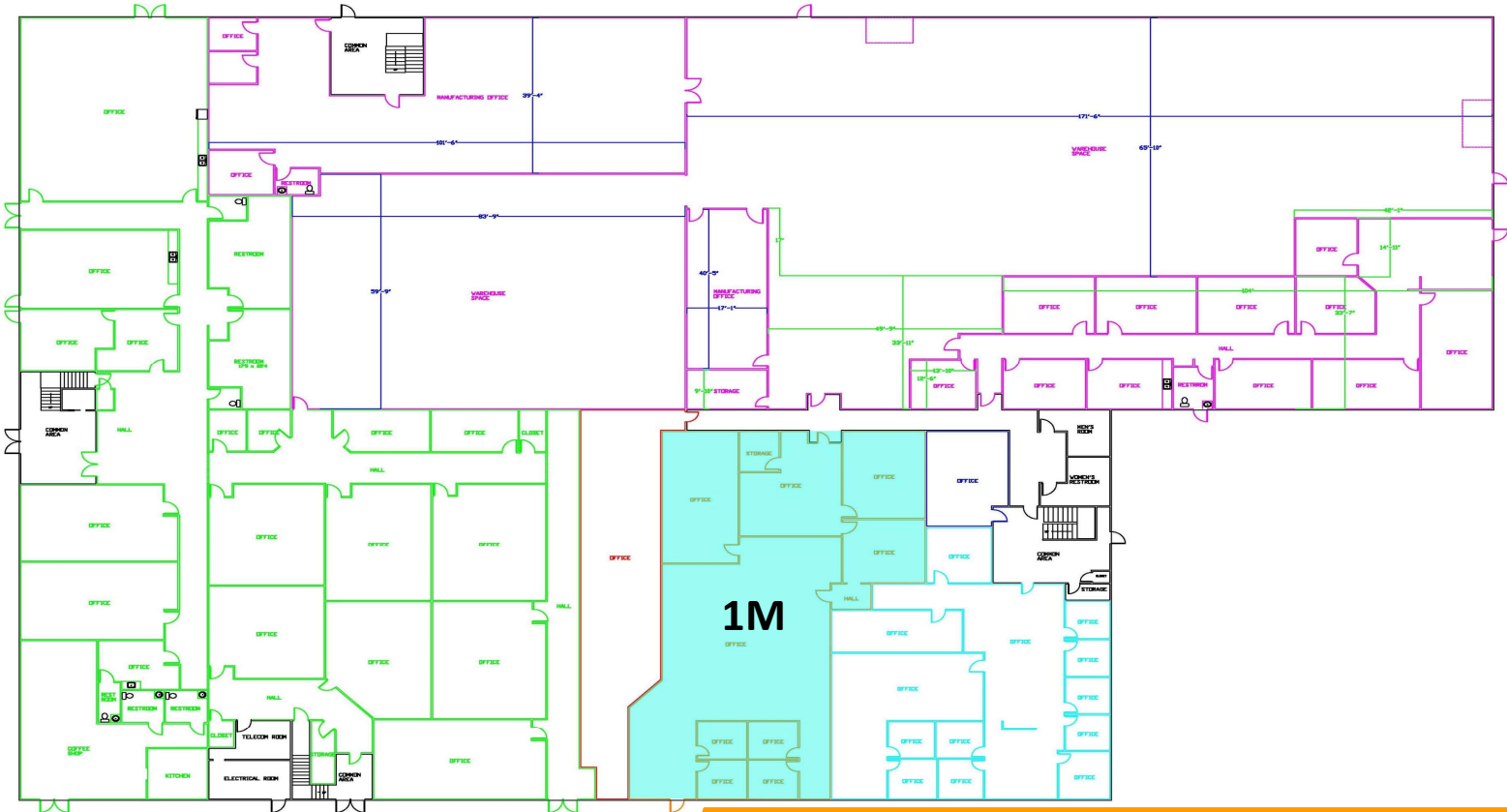


DAKIN & DAKIN
COMMERCIAL REAL ESTATE SERVICES

Office FOR LEASE

1745 Enterprise Drive

Fairfield, CA



1st Floor

AVAILABLE

1M - ±3,748 SF

1st Floor Details

- Diverse tenant mix
- Private access from parking lot
- Common lobby
- Common core bathrooms

Information contained herein has been obtained from the owners or from other sources deemed reliable. We have no reason to doubt its accuracy but regret we cannot guarantee it. All information subject to change or withdrawal without notice.

For more information:

Eric Dakin

Managing Broker

707 392 5122

eric@dakinanddakin.com

CA License No. 01816124

619 Buck Avenue, Suite B

Vacaville, CA 95688

707 200 2097

www.dakinanddakin.com

Broker License No. 01816124

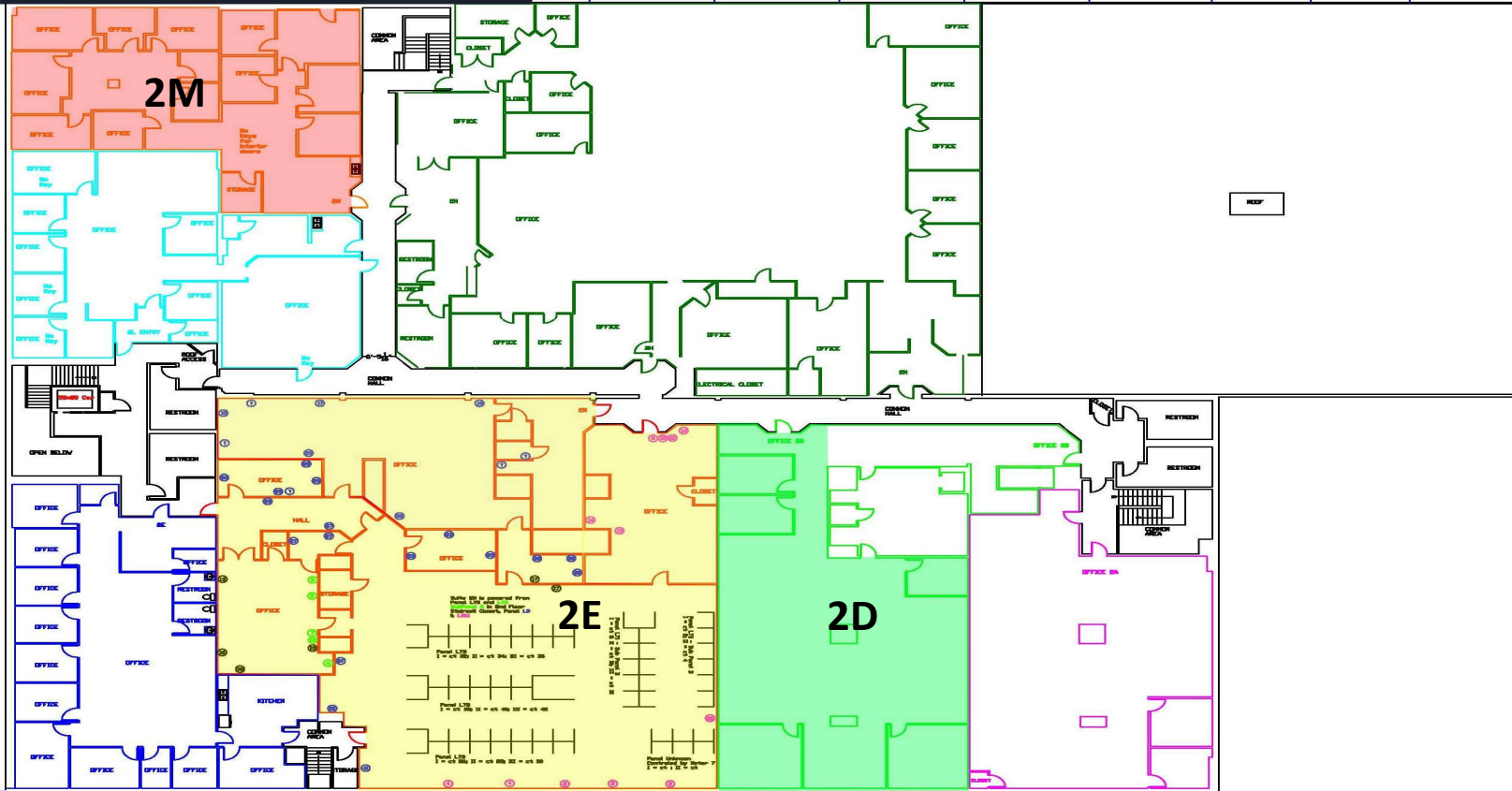


DAKIN & DAKIN
COMMERCIAL REAL ESTATE SERVICES

Office FOR LEASE

1745 Enterprise Drive

Fairfield, CA



2nd Floor

AVAILABLE

2M - ±2,850 SF

2E - ±8,998 SF

2D - ±3,605 SF

2nd FLOOR DETAILS

- Diverse tenant mix
- Elevator served
- Flexible footprints w/ contiguous vacancy
- Common core bathrooms

Information contained herein has been obtained from the owners or from other sources deemed reliable. We have no reason to doubt its accuracy but regret we cannot guarantee it. All information subject to change or withdrawal without notice.

For more information:

Eric Dakin

Managing Broker

707 392 5122

eric@dakinanddakin.com

CA License No. 01816124

619 Buck Avenue, Suite B

Vacaville, CA 95688

707 200 2097

www.dakinanddakin.com

Broker License No. 01816124



DAKIN & DAKIN
COMMERCIAL REAL ESTATE SERVICES

1745 Enterprise Drive Fairfield, CA

OFFICE FOR LEASE



For more information:

Eric Dakin

Managing Broker

707 392 5122

eric@dakinanddakinson.com

CA License No. 01816124

619 Buck Avenue, Suite B

Vacaville, CA 95688

707 200 2097

www.dakinanddakinson.com

Broker License No. 01816124



DAKIN & DAKIN
COMMERCIAL REAL ESTATE SERVICES